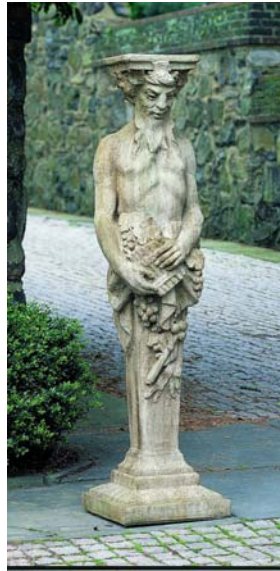


# CAMPANIA



2930 on 2932 in the **OLD**  
Aged Limestone (AL)



S-218 in the **OLD**  
Aged Limestone (AL)



P-209 in **OLD** Aged Limestone (AL)

Aged Limestone has changed from our original interpretation of this color. Many factors are involved in creating an original hand applied patina which affect the end result. Due to pigment variations and customer requests our Aged Limestone has changed from the look above to the look below. It is a softer blend of colors, and more like natural aging.



P-566 and P-567 in the **NEW**  
Aged Limestone (AL)



P-573 in **NEW**  
Aged Limestone (AL)



A-037 and A-038 **NEW**  
Aged Limestone (AL)